

Collegiate Gambling Education Program



About IC360

Integrity Compliance 360 (IC360) is a global integrity monitoring & regulatory consulting company, distinguished for its commitment to providing data- & technology-driven compliance solutions tailored for the nuanced sports betting & iGaming ecosystems. With a robust portfolio of services and a team of seasoned experts, IC360 empowers organizations to navigate complex regulatory frameworks, uphold ethical standards, and foster a secure environment.



www.IC360.io

PA Schools and Counties

| Schools Completed | County | Upcoming / Pending |
|-------------------|--------------|------------------------|
| Thiel | Mercer | Gannon |
| Juniata | Huntingdon | Mercyhurst |
| Wilkes | Luzerne | PSU - DuBois |
| Bucknell | Union | Seton Hill |
| Temple | Philadelphia | United East Conference |
| Drexel | Philadelphia | York |
| Penn State | Centre | Gettysburg |
| Robert Morris | Allegheny | |



PA SUMMARY & ENGAGEMENT

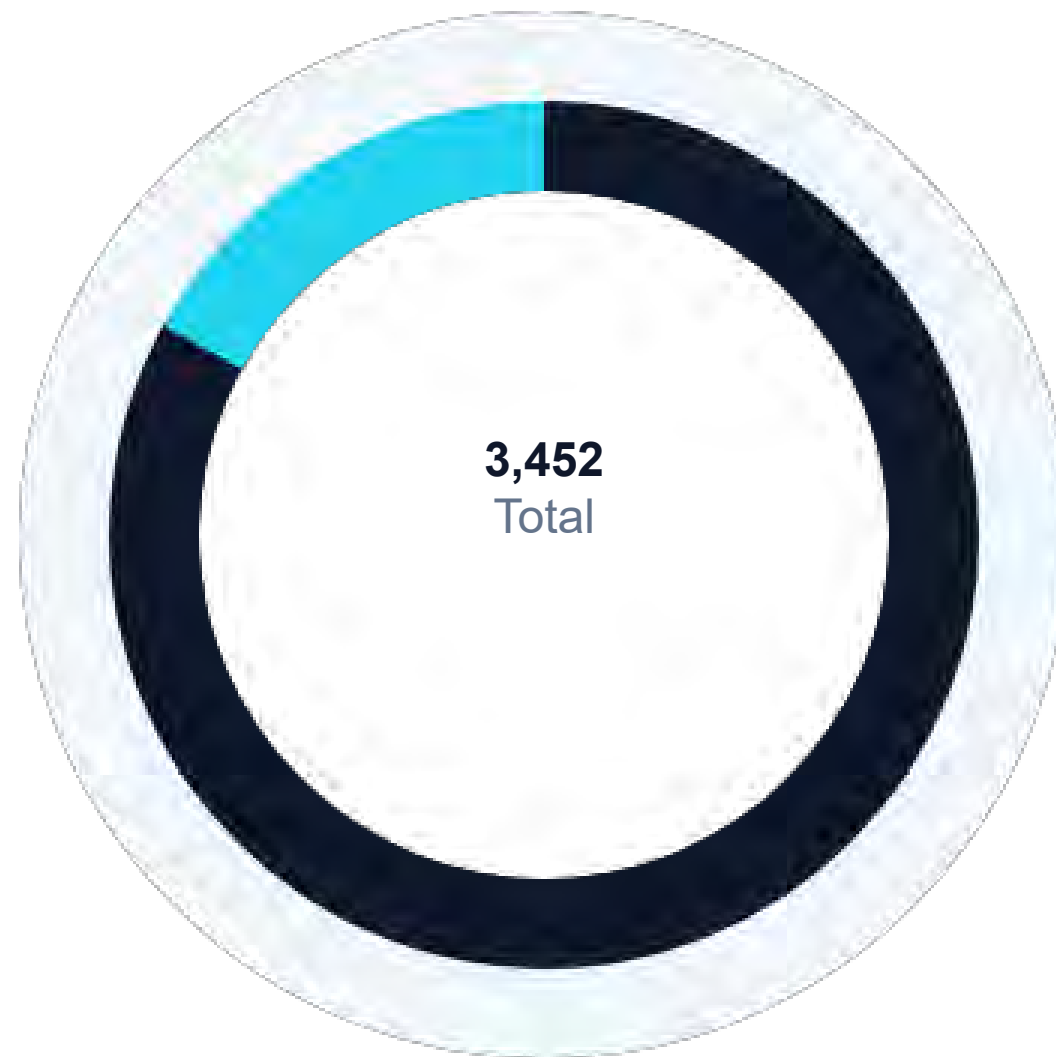
5,650
TOTAL ATTENDEES

3,452
TOTAL RESPONSES

61%
RESPONSE RATE

A significant sample size across the 2025 and 2026 sessions demonstrates a deep engagement level from the Pennsylvania athletic community regarding gambling integrity and education.

PARTICIPANT DEMOGRAPHICS

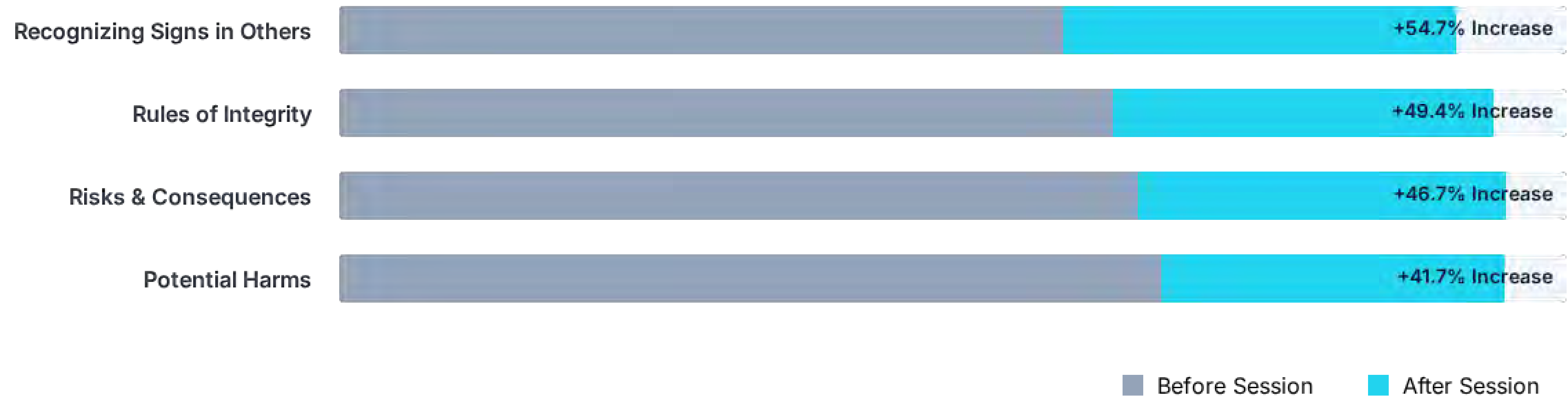


■ 83% Athletes (2,865)

■ 17% Staff / Coaches (587)

♂ 54% Male | 46% Female

MASSIVE SHIFTS IN AWARENESS



IMPACT ON MENTAL WELL-BEING

36%

Of respondents report negative affects on well-being due to wagering.

Totaling 1,243 respondents experiencing direct psychological distress linked to gambling activity.



Stress & Anxiety

Increased mental fatigue and persistent worry regarding financial or social status.



Sleep Disruption

Significant changes in sleep patterns or difficulty resting effectively.

HARASSMENT AND THREATS



The Digital Threat

62 participants reported receiving threatening messages from bettors. The vast majority of these encounters occur in digital spaces where accountability is low.

87%
via Social Media

53%
Took No Action

Only 17.7% reported the harassment to an authority figure, highlighting a critical reporting gap.

INTEGRITY VULNERABILITIES



11.8%

Aware of another athlete or administrator betting on college sports in the last year.



2.5%

Personally placed bets on college sports within the last 12 months.



14.3%

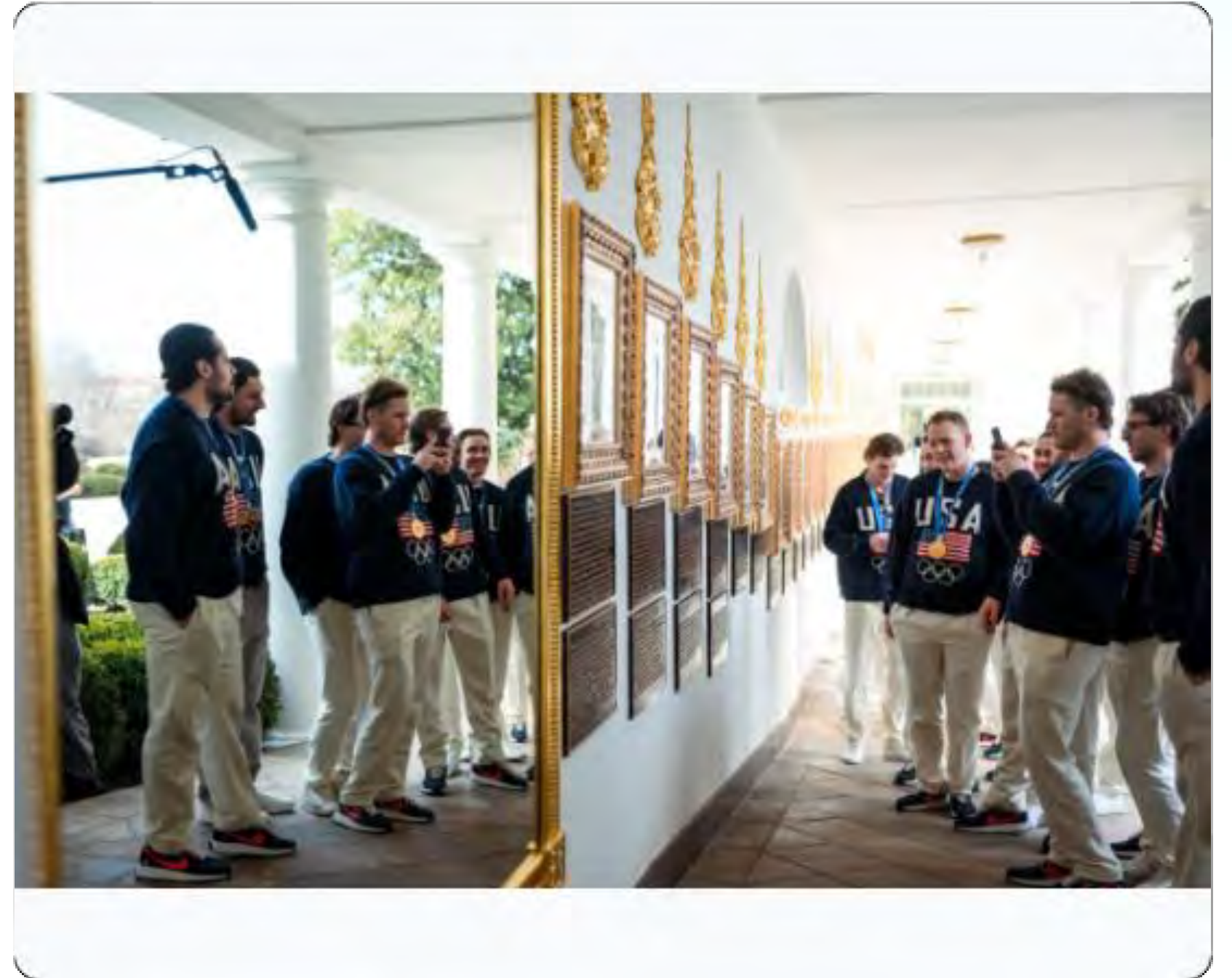
Combined population either betting or aware of betting on college games.

REQUESTS FOR INSIDE INFORMATION

Compromised Integrity

The demand for non-public information remains a significant risk factor for athlete integrity. Individuals are being pressured to provide an edge to bettors.

- 1.0% directly asked for inside info.
- 2.4% know someone who was asked.
- 3.4% total exposure to potential integrity breach requests.



FINANCIAL AND BEHAVIORAL RISK

8.4%

HAVE ACTIVE BETTING ACCOUNTS

15.8%

SUSPECT NEGATIVE
RELATIONSHIP

Key Insight: Nearly 16% of participants suspect either themselves or a close peer of having a problematic relationship with gambling.

QUALITATIVE ELEMENTS

1. The Power of Personal Testimony

Participants found the speaker's personal history with gambling addiction to be "eye-opening," "inspiring," and "honest. It shifted the topic from a dry set of rules to a "real-world" case study and example. Hearing the "pathway" of how gambling problems can start small and may spiral into a life-altering issue helped athletes see the "slippery slope" for themselves.

2. Clarity on Rules and Consequences

A significant number of attendees were surprised by the strictness of NCAA regulations, specifically regarding fantasy sports contests. Many noted they didn't realize fantasy leagues were prohibited or counted as gambling. There was a strong reaction to how technology is used to track and monitor athletes. Learning that betting apps "ping your location" and that investigators monitor for "inside info" can serve as a powerful deterrent.

3. Mental Health and Warning Signs

The workshop successfully expanded the definition of gambling from a financial issue to the potential for a well being and personal safety issue. Many participants found it useful to learn the "warning signs" of addiction, not just for themselves but to help teammates and others. Seeking support and reporting social media abuse and harassment directed at athletes from bettors cited as a major "new" piece of information.

A person is swimming underwater in clear blue water. The person is positioned on the left side of the frame, with their head and arms visible. The water is a deep blue color with some ripples and bubbles. A white rectangular box is overlaid on the center of the image, containing the text.

WHAT FACTORS PUT YOU AT RISK?



WHAT MAKES AN ATHLETE **MORE VULNERABLE?**

PERVASIVE AND NORMALIZED

COMPETITIVE / RISK TAKERS

INJURY

ADVANCED KNOWLEDGE

BUZZ/ADRENALINE REPLICATION

TRANSITIONING ATHLETES INTO AND OUT OF SPORTS

DISPOSABLE INCOME (NIL)

PRACTICE MAKES YOU BETTER

CASE STUDIES

CASE STUDY

COLLEGE ATHLETE BETTING CRACKDOWN

THE

- In May 2023, **law enforcement detected widespread illegal sports betting by over 35 college athletes and staff**, using geolocation software. Many athletes bet on their own teams, sometimes against them, and often used others' accounts. Staff members placed thousands of dollars in bets.

LEGAL

- Law enforcement initiated the crackdown and filed charges, with at least **one football player charged for using a relative's account**.

IMPACT & CONSEQUENCES

- The NCAA imposed severe penalties, including **permanent ineligibility** for athletes betting on their own sport, along with suspensions and team discipline.



CASE STUDY

BASKETBALL DAILY FANTASY VIOLATION

THE

- **Men's Basketball players** were caught, via anonymous tip, using the "Sleeper" daily fantasy platform to bet on their own stats (e.g., "unders" on points/rebounds) in games they played, with small wagers like \$50. The **NCAA prohibits all athlete sports betting, including daily fantasy with entry fees/prizes, regardless of state legality.**

LEGAL

- An internal investigation was launched based on an anonymous tip, **focusing on players' use of the "Sleeper" platform.**

IMPACT & CONSEQUENCES

- (Implicit) Players likely face **NCAA suspensions or loss of eligibility, and institutional discipline.** This case will lead to increased NCAA and institutional monitoring of daily fantasy participation among athletes.

CASE STUDY

GAMBLING AMONGST THEMSELVES

THE

- **A Men's Swimming and Diving team was suspended for the rest of the 2023-24 season due to widespread sports wagering violations.** Over 60% of the team established an internal sportsbook, betting on their own and teammates' swim times, plus external events like the Super Bowl. The NCAA strictly prohibits athlete gambling, regardless of state law.

LEGAL

- **The university immediately suspended the entire team and made involved athletes ineligible for team activities.** Individual athletes also face potential further NCAA penalties, including **suspensions or loss of eligibility.**

IMPACT & CONSEQUENCES

- The team **cannot compete for the remainder of the season.** Individual athletes face severe NCAA sanctions. The incident reinforces the NCAA's zero-tolerance policy on athlete sports wagering.

View Profile

 **Jerz Way Betting**
@JerzWayBetting

...will miss today's game @ [redacted]
Missed last game @ [redacted] with an ankle injury. Averages [redacted]
rpg. (via Instagram)

7:07 AM

U back today??

8:35 AM

Unfortunately Naw

Message...

Case Study

Nefarious Sports Betting

Activity: **Inside Information**

A top player from a Top 25 collegiate basketball team was asked via social media if they would be playing in that evening's game. The account, linked to sports betting, immediately posted the message publicly. This caused the betting market to react strongly, shifting the game's spread from -6.5 to -3.5.

Case Study: Dan Trolaro

Managing Director of Education & Safer Play





HOW SPORTS BETTING IS MONITORED

Integrity Monitoring

IC360 provides cutting-edge technology, domain expertise, and best-in-class service to sports properties, operators, and regulators globally.

What We Do.

Identify Suspicious Activity

Analyze odds, wagering and event data for irregularities.

Monitor Discrepancies

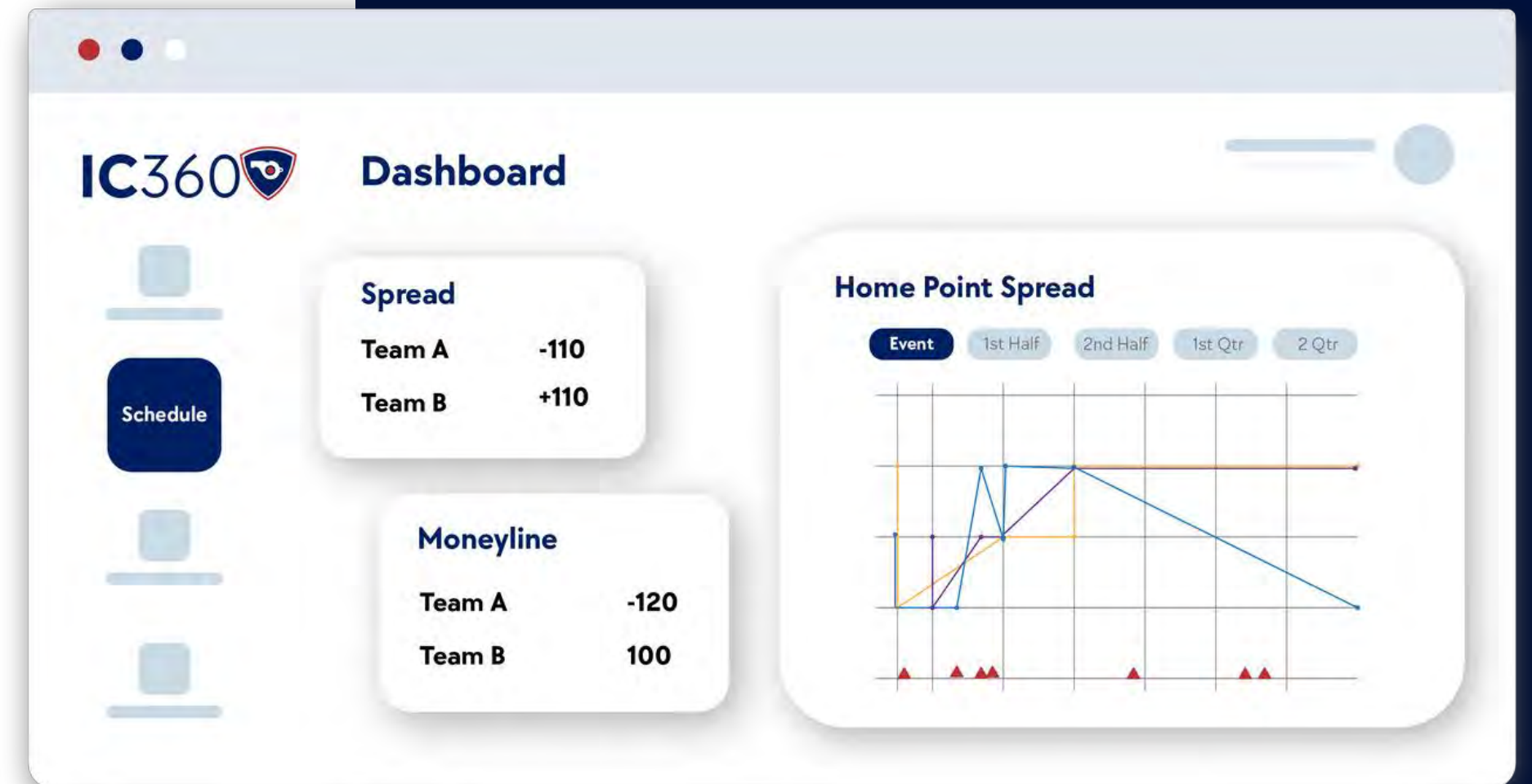
Track player, coaching and officiating behavior for anomalies.

Investigative & Intelligence Support

Provide post alert support and regulatory guidance.

Real-Time, Global Alerting Technology

Send timely alerts to accurately and efficiently address potential integrity issues and investigations



GEOLOCATION

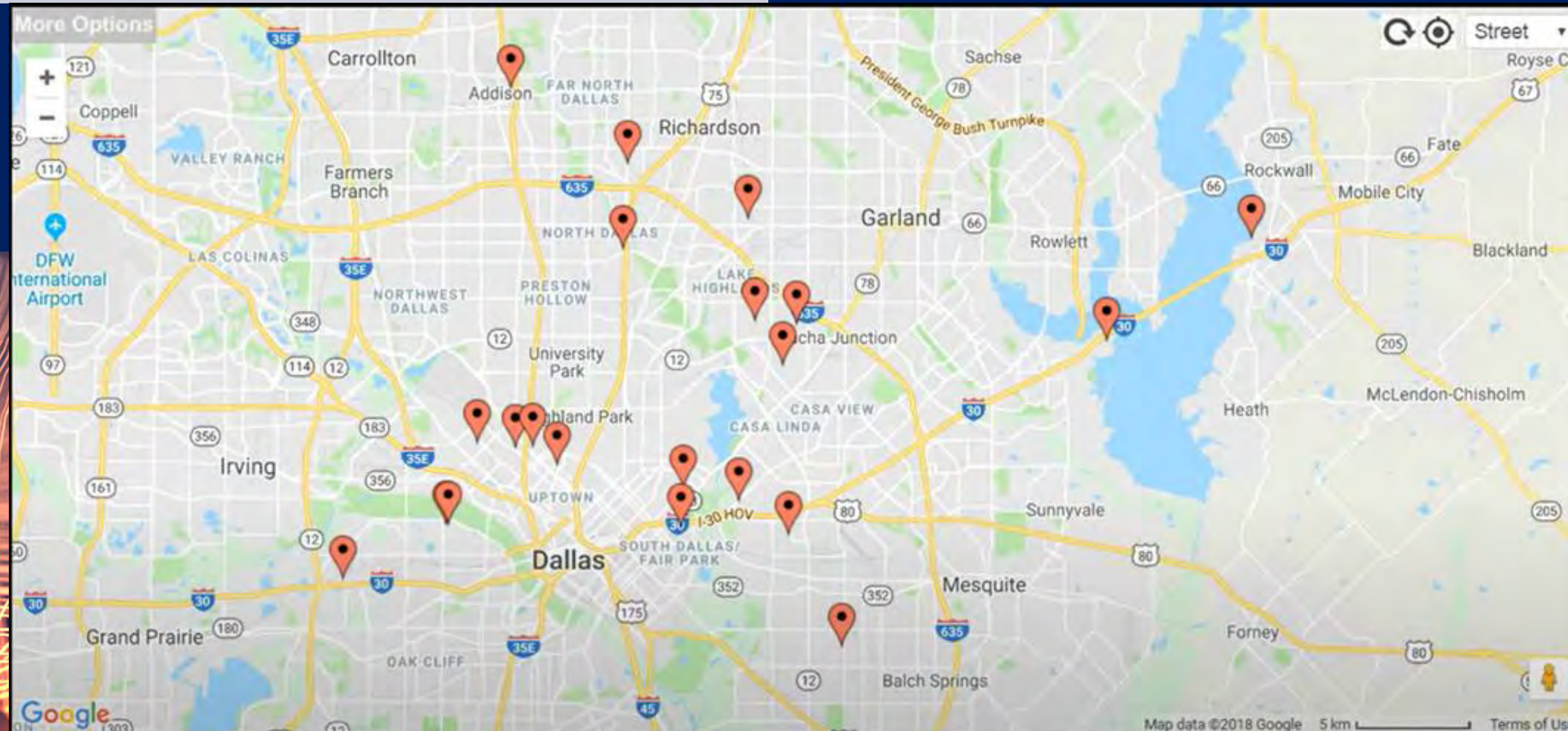
HOW SPORTS BETTING IS MONITORED

Who Has Access?

Sportsbook operators and gaming regulators **have the users' consent** to access their geolocation whenever they use a sportsbook app.

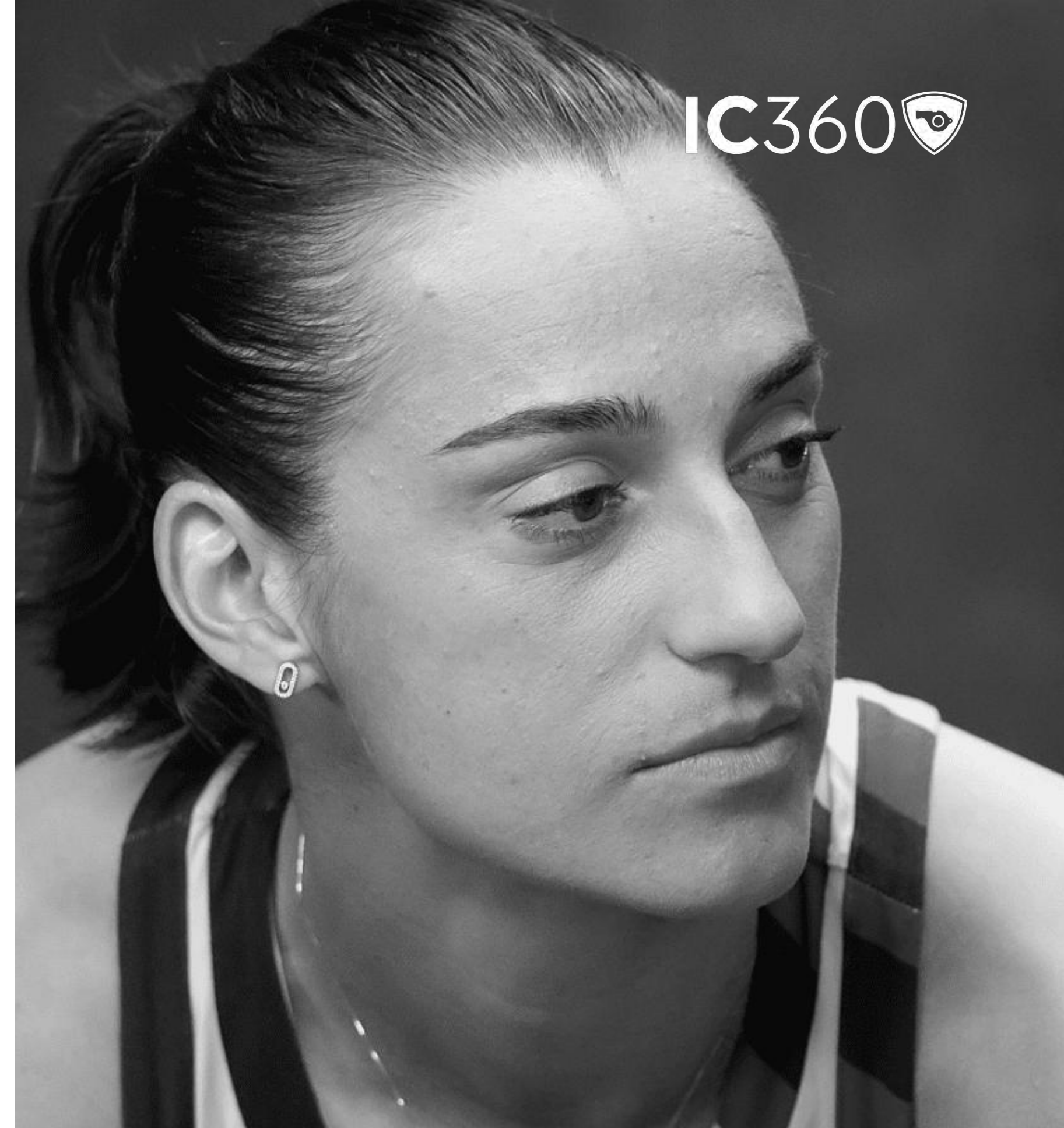
What Are The Implications?

Authorities are utilizing geolocation maps around athletic facilities to detect potential illegal betting activities by prohibited individuals.



A close-up photograph of a soccer player's foot in a black cleat with white studs, resting on a black and white soccer ball. The player is wearing red socks with white stripes at the top. The background is a blurred stadium filled with spectators. The entire image has a dark blue overlay.

THE RISE OF ONLINE HARASSMENT

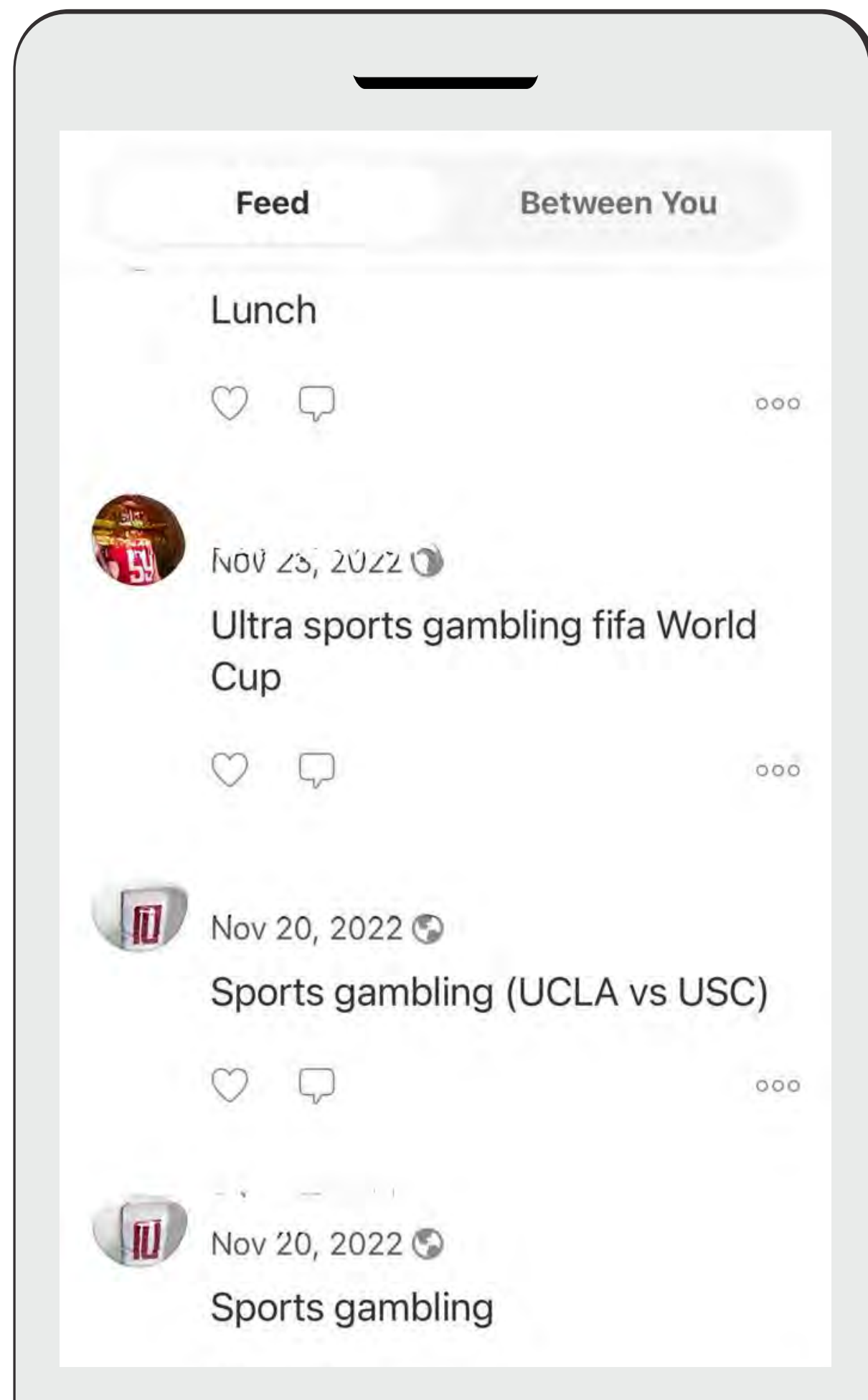


GAMBLING-RELATED ABUSE

2:39 PM
PRAYING YOU [REDACTED] DIE

3:40 PM
If I catch u in [REDACTED] im
taking my belt off on u you bum
[REDACTED]

3:10 PM
You are such a [REDACTED]
that choked so hard in 2025.
Please get the [REDACTED] out of
[REDACTED] and never come back.
You shamed [REDACTED]
program by being part of the
worst team to ever grace [REDACTED]
[REDACTED]



THE HIGH PRICE OF A "HARMLESS" JOKE

What an athlete sees as a harmless joke about betting can be perceived as a serious issue by their team or the league.

A photograph of a person's legs and feet in running shoes on a track, with a white box containing text overlaid. The person is wearing white and red running shoes and is positioned on a red track with white lane markings. The background is blurred, showing other people and a yellow cone. The text is in a bold, white, sans-serif font.

WHAT DOES IT MEAN FOR YOU



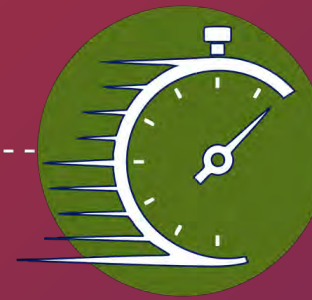
Deshawn Hanika



WARNING SIGNS FOR PROBLEMATIC GAMBLING BEHAVIORS



Preoccupation



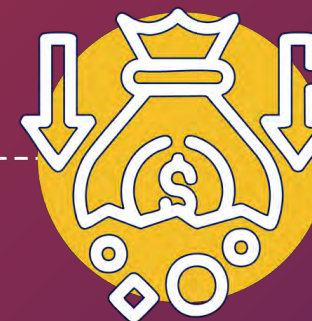
Ignoring Limits



Guilt or Shame



Increasing Bets



Chasing Losses



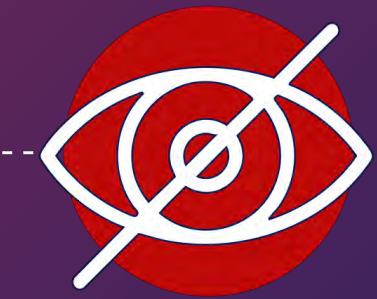
Mood Swings



Gambling to Cope



Relationship Strain



Hiding Gambling



Financial Strain



Neglecting Duties



Failed Attempts

Safer Gambling Strategies

Stay Sober
Dont gamble when upset or under the influence

Limit Your Time
Treat Gambling as entertainment; set time limits.

Set a Budget
Only gamble with money you can afford to lose.

Avoid Chasing Losses
If you lose, take a break instead of betting more.

Recognize Warning Signs
If you lose, take a break instead of betting more.

BET
BET
BET!



Thank You!

Discussion



GAMBLING RESOURCES in PA

 Council on Compulsive Gambling of PA

 24/7 Helpline 1-800-GAMBLER

 Official Website www.pacouncil.com

**Confidential, 24/7 assistance for individuals and family members impacted by gambling. Support available in 200+ languages.*